

MLS Area 6

Residential Statistics

Independence Title

December 2021

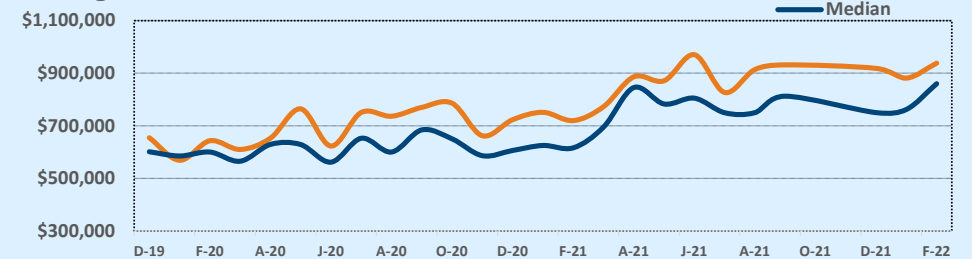
Listings	This Month			Year-to-Date		
	Dec 2021	Dec 2020	Change	2021	2020	Change
Single Family Sales	28	50	-44.0%	374	385	-2.9%
Condo/TH Sales	38	46	-17.4%	333	304	+9.5%
Total Sales	66	96	-31.3%	707	689	+2.6%
New Homes Only	8	12	-33.3%	73	101	-27.7%
Resale Only	58	84	-31.0%	634	588	+7.8%
Sales Volume	\$60,614,469	\$69,421,698	-12.7%	\$595,796,274	\$480,414,817	+24.0%
New Listings	23	56	-58.9%	720	904	-20.4%
Pending	--	--	--	--	--	--
Withdrawn	9	7	+28.6%	36	87	-58.6%
Expired	9	7	+28.6%	36	87	-58.6%
Months of Inventory	0.5	1.1	-28.8%	N/A	N/A	--

Average	This Month			Year-to-Date		
	Dec 2021	Dec 2020	Change	2021	2020	Change
List Price	\$913,362	\$731,594	+24.8%	\$815,702	\$708,867	+15.1%
List Price/SqFt	\$550	\$426	+29.0%	\$524	\$433	+20.9%
Sold Price	\$918,401	\$723,143	+27.0%	\$842,710	\$697,264	+20.9%
Sold Price/SqFt	\$559	\$421	+33.0%	\$545	\$427	+27.6%
Sold Price / Orig LP	101.9%	98.8%	+3.1%	104.1%	98.8%	+5.4%
Days on Market	25	47	-45.5%	27	40	-31.7%

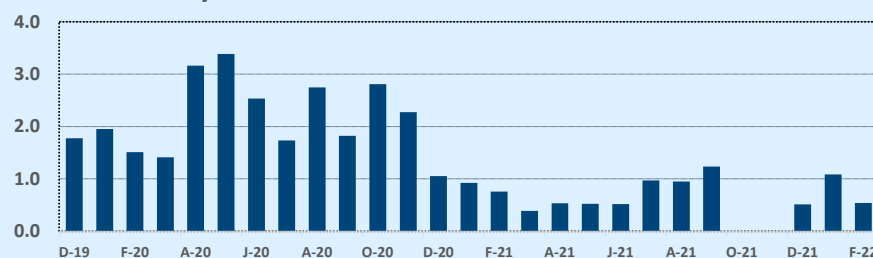
Median	This Month			Year-to-Date		
	Dec 2021	Dec 2020	Change	2021	2020	Change
List Price	\$775,000	\$600,000	+29.2%	\$725,000	\$615,000	+17.9%
List Price/SqFt	\$502	\$382	+31.4%	\$483	\$410	+18.0%
Sold Price	\$750,000	\$606,000	+23.8%	\$755,000	\$610,000	+23.8%
Sold Price/SqFt	\$499	\$381	+31.1%	\$505	\$405	+24.6%
Sold Price / Orig LP	100.0%	99.1%	+0.9%	100.3%	99.2%	+1.1%
Days on Market	8	29	-72.4%	6	18	-66.7%

Price Range	This Month			Year-to-Date		
	New	Sales	DOM	New	Sales	DOM
\$149,999 or under	--	--	--	--	--	--
\$150,000- \$199,999	--	--	--	8	5	42
\$200,000- \$249,999	--	1	5	20	25	48
\$250,000- \$299,999	--	3	6	41	34	9
\$300,000- \$349,999	3	4	7	42	38	18
\$350,000- \$399,999	--	6	11	33	32	15
\$400,000- \$449,999	1	3	22	20	24	17
\$450,000- \$499,999	1	1	20	20	23	17
\$500,000- \$549,999	--	1	5	17	20	30
\$550,000- \$599,999	--	2	35	20	17	26
\$600,000- \$699,999	3	6	21	80	83	30
\$700,000- \$799,999	1	8	47	101	84	18
\$800,000- \$899,999	--	6	7	65	91	24
\$900,000- \$999,999	4	5	54	64	41	48
\$1M - \$1.99M	8	17	33	153	165	34
\$2M - \$2.99M	1	2	9	28	23	22
\$3M+	1	1	4	8	2	64
Totals	23	66	25	720	707	27

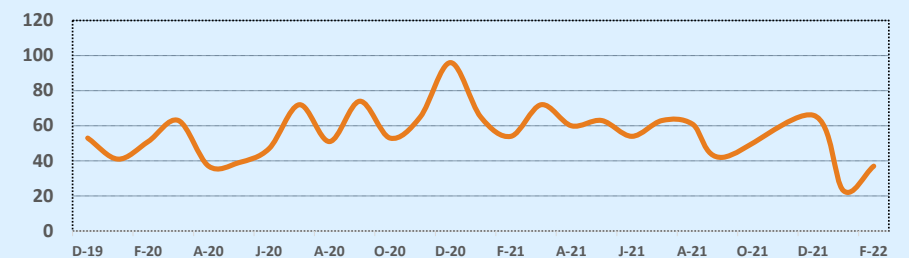
Average & Median Sales Price - Last Two Years



Months of Inventory - Last Two Years



Number of Sales - Last Two Years



Based on information from the Austin Board of REALTORS® (alternatively, from ACTRIS). Neither the Board nor ACTRIS guarantees or is in any way responsible for its accuracy. The Austin Board of REALTORS®, ACTRIS and their affiliates provide the MLS and all content therein "AS IS" and without any warranty, express or implied. Data maintained by the Board or ACTRIS may not reflect all real estate activity in the market.